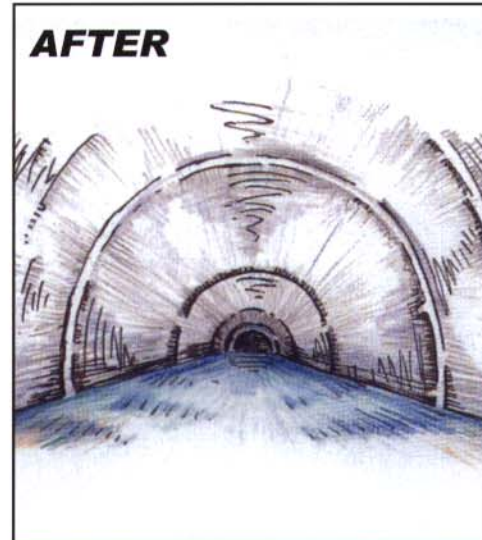
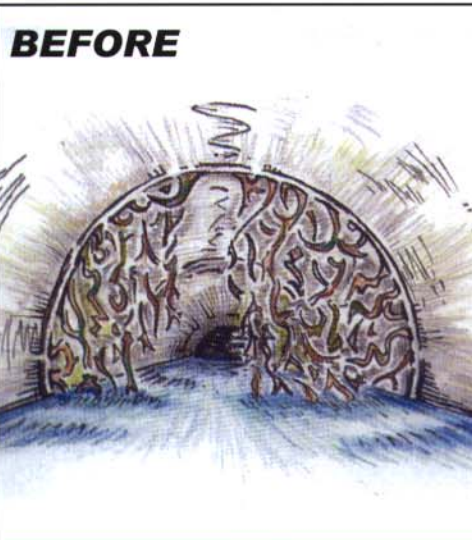


# IMP

## LIMITED

Industrial & Municipal  
Projects

# Technical Specifications



## HYDRO JET ROOT CUTTER

The Hydro Jet Root Cutter is a remote control, multi-purpose tool which is ideal for use in non man entry sewers. It can remove tree roots, hard scale deposits and intruding connections, returning pipelines to full efficiency. All operations are monitored and controlled by CCTV.

- Cutting tree roots.
- Cutting and removal of intruding connections.
- Descaling and removal of hard scale deposits.
- Cutting hardened grouts and cements.
- Cutting displaced bricks.
- Ensures complete removal of tree roots from any pipeline to maintain full bore flow.
- Operations monitored by CCTV.